



The 6th Asian Cardiovascular Symposium

A pre-meeting symposium of BCVS-2024

Sunday, July 21, 2024, Chicago

Hilton Chicago | Chicago, Illinois

720 South Michigan Avenue | Chicago, IL | 60605



Asian Cardiovascular Symposium

Jointly organized by:

Academy of Cardiovascular Research Excellence (ACRE)

Japanese Cardiovascular Research Association (JCRA)

Korean Cardiovascular Society (KCS)

Society for South Asian Heart Research (SAHR)

Program at a glance:

Noon to 1PM – Registration

1-5PM – Society Program

5-7PM – Poster Session

7-10PM – Keynote, Awards, and Dinner

Keynote Speaker: **Hossein Ardehali, MD, PhD** (Northwestern University)

Registration:

(online) <https://my-acre.org/acs-2024/>

ACS Registration (\$100)

Dinner (\$110) including keynote, award presentation, and social

**Apologies, we have reached full capacity.*

Onsite registration \$120 in front of the Waldorf Rm (3rd floor)

For questions, please contact Satoru Kobayashi (skobayas@nyit.edu)

Register Now!



Scan to register and get the program



Overview of 6th ACS Program

12:00 PM – 1:00 PM	Registration In front of Waldorf Room (3rd floor)				
1:00 PM – 5:00 PM	Society Program				
		ACRE Waldorf (3 rd floor)	JCRA Williford A (3 rd floor)	KCS Williford C (3 rd floor)	SAHR Marquette (3 rd floor)
		Opening	Opening	Opening	Opening
	1:00 PM	Session I	Session I	Session I	Session I
		Featured Presentation		Plenary Lecture	Early Career Faculty Presentations
				Session II	
				Invited Lecture from SAHR	
	2:00 PM				
					Session II
			Exchange Program featured speaker from ACRE		Plenary Exchange Speaker Seminar
		Break	Break	Break	Break
	3:00 PM	Session II	Session II	Session III	Session III
		ACRE-Cardiology Discovery Young Investigator Award Presentation		Invited Lecture	Mid-career /Established Faculty Presentations
				Session IV	Session IV
				Oral Presentation	Data Blitz:Pre-doctoral Trainee Presentations
	4:00 PM	Session III			Session V
		ACRE Junior Faculty Award Presentation			Data Blitz:Post-doctoral Trainee Presentations
		Annual meeting			
	5:00 PM	Closing	Closing	Closing	Closing
5:00 PM – 6:45 PM	Poster Session Salon A in the Stevens Meeting Center (B1 floor)				
7:00 PM – 10:00 PM	ACS Joint Assembly and Dinner (Waldorf, 3 rd floor)				
	7:00 PM	Opening			
	7:05 PM	Dinner			
	8:00 PM	ACS Program Introduction			
	8:15 PM	BCVS Leadership Remarks			
	8:30 PM	Keynote speech- Hossein Ardehali, MD, PhD			
	9:15 PM	Award Announcement			
	9:30 PM	Closing			



Special Acknowledgements

BCVS Chair Jianyi “Jay” Zhang, MD, PhD, University of Alabama at Birmingham

BCVS Vice Chair Maria Kontaridis, PhD, Masonic Medical Research Institute

BCVS 2024 Program Committee Chair Sumanth Prabhu, MD, FAHA, Washington University

BCVS 2024 Program Committee Vice-Chair Farah Sheikh, PhD, UC San Diego

AHA Scientific Meetings 

Acknowledgments

ACS acknowledges generous donations from the following sponsors:

Individual Donations

Maria Kontaridis, PhD, Masonic Medical Research Institute

Raj Kishore, PhD, Temple University

Sathyamangla V. Naga Prasad, PhD, Cleveland Clinic

Young-sup Yoon, MD, PhD, Emory School of Medicine

Sang-Ho Lee, PhD, Emory School of Medicine

Jiang Chang, MD, PhD, Texas A&M Institute of Biosciences and Technology

Junichi Sadoshima, MD, PhD, Rutgers New Jersey Medical School

Anonymous donors

Financial Sponsors

Cardiology Discovery

<https://journals.lww.com/cd/pages/default.aspx>

Cardiology Discovery (CD) is the official journal of the Chinese Society of Cardiology (CSC) of Chinese Medical Association (CMA). It is an English language, peer-reviewed journal that aims to publish high-quality materials on all aspects of cardiovascular medicine and surgery, including original clinical, epidemiological, basic and translational research, health services and outcomes studies, state-of-the-art reviews, technical evaluations, case reports, editorial, perspective, consensus and guideline papers. CD has an international outlook, that is to create a platform of international collaboration and exchange of cutting-edge information on cardiovascular research and education.



GenoBioTX (formerly Shanghai Model Organisms Center, Inc.):

<http://www.modelorg.us/>

56 Sugar Creek Blvd Suite 375, Sugar Land, TX 77478

Excels in providing cutting-edge animal modeling and associated services: 1) An extensive inventory of over 10,000 GEMMs, featuring more than 600 humanized mouse lines tailored for research needs. 2) A proven track record of customizing over 20,000 strains, demonstrating our expertise in genetic modification. 3) A comprehensive range of pharmacology services to accelerate oncology pre-clinical drug discovery, including cardiovascular disease models, various auto-immune diseases models, tumor models and gene modified cell lines.



OBio Technology

<https://www.obio-tech.com/>

OBio Technology is a leading plasmids and viral vector packaging service

provider. As a listed company headquarter in Shanghai and branch in Boston, OBio tech dedicated to supply holistic gene delivery services to scientists and industry. Recently, OBio developed a new cardiomyocyte targeted 'AAV-Heart system', which shows more efficient than AAV9-cTnT system.



RWD Life Science

www.rwdstco.com

6540 Lusk Blvd, San Diego, CA 92121, USA

Since 2002, RWD Life Science has been the world leading manufacturer of laboratory research instruments for life science researches. We specialize in producing Animal Surgery and Modeling Solution; in vivo Imaging Solution, Histopathology Solution, Cellular and Molecular Biology Research Solution for researchers around the world. For more information, please visit our Web: <https://www.rwdstco.com/> or E-mail us: rwd@rwdstco.com.



Heartseed

<https://heartseed.jp/en/>

1-2-3 Shibaura, Minato-ku, Tokyo 105-0023, JAPAN

Heartseed is a pioneering clinical-stage biotech company that aims to cure severe heart failure with the world's first "remuscularization", or cardiomyocyte replacement therapy. Heartseed has proprietary technologies throughout the entire manufacturing process of the cardiomyocyte-cell product, including differentiation, purification, cell delivery and iPSC production.



Nissan Chemical Corporation

<https://nissanchem-usa.com/>

10333 Richmond Avenue, Suite 1100, Houston, TX 77042

Nissan Chemical provides the following innovative material-based solutions for regenerative medicine, stem cell-related drug discovery, and cell assays.

- 1) FP003B: Medium preparation kit for room temperature storage/transportation of single cells and spheroids
- 2) prevelex-CAT®: Highly and precise spheroid production plate



Nissan Chemical
CORPORATION

Ajinomoto Health & Nutrition North America, Inc.

<https://www.ajitrade.com/stemfit/>

4105 Poole Rd. Raleigh, NC 27610

StemFit™ and StemFit Purotein™ are Ajinomoto's high-quality brands of animal-origin free, GMP stem cell media and recombinant proteins contributing to the optimization and production of cells and cell therapy products.

Eat Well, Live Well.



AJINOMOTO.

Akoya Biosciences

<https://www.akoyabio.com/>

100 Campus Drive, 6th Floor, Marlborough, MA 01752

As The Spatial Biology Company®, Akoya Biosciences' mission is to bring context to the world of biology and human health through the power of spatial phenotyping. The company offers comprehensive single-cell imaging solutions that allow researchers to phenotype cells with spatial context and visualize how they organize and interact to influence disease progression and response to therapy. Akoya offers a full continuum of spatial phenotyping solutions to serve the diverse needs of researchers across discovery, translational and clinical research: PhenoCycler®, Phenolmager® Fusion and Phenolmager HT Instruments.



AKOYA
BIOSCIENCES®

THE SPATIAL BIOLOGY COMPANY®



The Academy of Cardiovascular Research Excellence (ACRE) Oral Session

Room: Waldorf (3rd floor), 1:00 PM – 5:00 PM

Opening

13:00-13:10 **Opening Remarks**

Xuejun (XJ) Wang, MD, PhD, University of South Dakota
President of ACRE

Li Qian, PhD, University of North Carolina at Chapel Hill

Liya Yin, MD, PhD, Northeast Ohio Medical University

ACRE Program & Science Committee Co-chair

Session I **Featured Presentation**

Moderators: Yi Hong, PhD, University of Texas at Arlington

Jie Li, MD, PhD, Augusta University

13:10-13:30 Deqiang Li, PhD, Research Institute at Nationwide Children's Hospital, Columbus

Title: **The Role of Nonmyocytes During Myocardial Development, Do We Know Everything?**

13:30-13:50 Xi Fang, PhD, University of California, San Diego

Title: **Dietary Linoleic Acid Supplementation Ameliorates Cardiomyopathy in Barth Syndrome**

13:50-14:10 Jun Wang, PhD, The University of Texas Health Science Center at Houston

Title: **To Beat or Not to Beat: A Hippo in the Sinoatrial Node**

14:10-14:30 Wuqiang Zhu, MD, PhD, Mayo Clinic, Arizona

Title: **Nanoparticles and Cardiac Drug Delivery**

14:30-14:50 Jin O-Uchi, MD, PhD, FAHA, FCVS, University of Minnesota (Exchanged Speaker from JCRA)

Title: **ER-Mitochondria Calcium Transport and Cardiac Fibrosis**

☕ Coffee Break: 10 min ☕

Session II **ACRE-Cardiology Discovery Young Investigator Award Presentation**

Moderators: Yaoliang Tang, MD, PhD, Augusta University

Dan Tong, MD, PhD, University of Texas Southwestern Medical Center

15:00-15:15 Ning Liu, Chinese Academy of Medical Sciences & Peking Union Medical College

PTMA-MBD3 axis is a core heart regenerative driver in mammals

15:15-15:30 Yijie Wang, University of California Los Angeles

Fibroblasts in Heart Scar Tissue Directly Regulate Cardiac Excitability and Arrhythmogenesis

15:30-15:45 Qiang Zhu, University of North Carolina at Chapel Hill

Unveiling the Role of GRAF1 in Orchestrating Mitophagy and Metabolic Flexibility in Stressed Cardiomyocytes

15:45-16:00 Yu Sun, Lerner Institute, Cleveland Clinical Foundation

Targeting β -adrenergic receptor resensitization attenuates cardiac dysfunction

Sponsor Presentation I

16:00 -16:05 Introduction of *Cardiology Discovery*

16:05-16:10 Vendor show RWD Life Science

☕ Coffee Break: 5 min ☕

Session III ACRE Junior Faculty Award Presentation

Moderators: Hongyu Qiu, MD, PhD, University of Arizona, College of Medicine
Hongchao Guo, PhD, University of Utah

16:15-16:30 Ying Wang, Southern University of Science and Technology, China
Gene therapy of MAOA fine-tunes nuclear cAMP nanodomain and improves cardiac hypertrophy in mice

16:30-16:45 Dennis Wang, University of Washington, Seattle
Mitochondria-containing Extracellular Vesicle Mediate Heart Failure Sterile Inflammation

Annual ACRE Business Meeting

Presided by: Xuejun (XJ) Wang, MD, PhD, ACRE President

16:45-16:55

Report from Membership Chair: Yajing Wang, MD, PhD, University of Alabama at Birmingham

Report from Financial Chair: Qiangrong Liang, MD, PhD, New York Institute of Technology

Closing Remark

16:55-17:00

President-elect: Zhao Wang, PhD, City of Hope National Medical Center

Group Photo Time

17:00-17:05

Poster Session (joint)

17:05-18:45 **Poster viewing - Salon A in the Stevens Meeting Center (B1 floor)**



The Japanese Cardiovascular Research Association (JCRA) Oral Session

Room: Williford A (3rd floor), 1:00 PM – 5:00 PM

Opening

1:00 PM-1:05 PM **Opening Remarks**
Koichiro Kuwahara, MD, PhD, Shinshu University School of Medicine

Session I

Moderators: Masataka Nishiga, MD, PhD, Stanford University School of Medicine
Tomoya Kitani, MD, PhD, Kyoto Prefectural University of Medicine

1:05 PM- Shinichi Oka, PhD, Rutgers New Jersey Medical School
Title: **Sirt1 inhibits the Sub1-induced RNA polymerase II recruitment to metabolic gene promoters during pressure overload**

1:20 PM- Atsuki En, PhD, Cincinnati Children's Hospital
Title: **Repairing nuclear envelope ruptures to ameliorate Lamin-related cardiomyopathy**

1:35 PM- Asuka Eguchi, PhD, University of California, Irvine
Title: **Cardiomyocytes Differentiated from Human Induced Pluripotent Stem Cells Show Robust Phenotypes to Test Gene Therapy Strategies for Duchenne Muscular Dystrophy**

1:50 PM- **Networking (35min)**

2:25 PM- Huabo Su, PhD, Augusta University (Exchange Program featured speaker from ACRE)
Title: **A New Mitochondrial Quality Control Mechanism in the Heart**

2:45 PM **Coffee Break (10min)**

Session II

Moderators: Satoru Kobayashi, PhD, NYIT College of Osteopathic Medicine
Daisuke Shimura, PhD, University of Utah

2:55 PM- Kiyoshi Masuyama, MD, PhD, UCLA Cardiac Arrhythmia Center
Title: **Cardiac-Selective TRPV1 Afferent Ablation in Subacute Myocardial Infarction Ameliorates Adverse Remodeling and Ventricular Arrhythmogenesis**

3:10 PM- Masaya Kogure, MD, Kyoto Prefectural University of Med
Title: **Inhibition of TAOK1-mediated Cardiomyocyte Death Attenuates Doxorubicin-Induced Cardiotoxicity**

3:25 PM- Sho Tanosaki, MD, PhD, Cardiovascular Institute, University of Pennsylvania

Title: Metabolomic Profile of Human End-Stage Ischemic Cardiomyopathy Reveals Few Differences from Non-Ischemic Cardiomyopathy

3:40 PM-

Risa Mukai, PhD, New Jersey Medical School

Title: **Mst1 induces cardiac dysfunction through the activation of PERK**

3:55 PM-

Yuta Yamamoto, DVM, PhD, Stanford University

Title: **Variant Effect Mapping by Combining Base-editing Mutagenesis and Multiplexed Functional Assays Using Human Cardiomyocytes**

4:10 PM-

Shuji Chino, MD, Shinshu University

Title: **Optimizing Immunosuppressive Strategies for Enhanced Survival of Allogeneic Pluripotent Stem Cell-Derived Cardiomyocytes in Non-Human Primate Transplantation Model**

4:25 PM-

Networking (15min)

Sponsor Presentation

4:40 PM-

Nissan Chemical

Closing Remarks/ Group Photo

4:45 PM-5:00 PM

Closing Remarks

Masataka Nishiga, MD, PhD, Stanford University School of Medicine

Poster Session (joint)

5:00 PM-6:45 PM

Poster viewing - **Salon A in the Stevens Meeting Center (B1 floor)**



Korean Cardiovascular Society (KCS) Oral Session

Room: Williford C (3rd floor), 1:00 PM – 5:00 PM

Opening

1:00 PM-1:05 PM **Opening Remarks**
Soon Jun Hong, MD, PhD, Korea University, Korea

Session I Plenary Lecture

Moderators: Soon Jun Hong, MD, PhD, Korea University, Korea
Jihyun Jang, PhD, Nationwide Children's Hospital, USA

1:05 PM-1:35 PM Youngkeun Ahn, MD, PhD, Chonnam National University, Korea
Title: Therapeutic Targeting of Cardiovascular Inflammation

Session II Invited Lecture, Exchange talk with SAHR

Moderators: Youngkeun Ahn, MD, PhD, Chonnam National University, Korea
Kyung-Han Kim, PhD, University of Ottawa Heart Institute, Canada

1:40 PM-2:00 PM Hun-Jun Park, MD, PhD, The Catholic University, Uijeongbu St. Mary's Hospital, Korea
Title: Heart regeneration-Making breakthrough and Renewed optimism

2:00 PM-2:20 PM Jihyun Jang, PhD, Nationwide Children's Hospital, USA
Title: Nonmyocardial Epigenetic Pathway Contributing to Heart Development

2:25 PM-2:45 PM Sakthivel Sadayappan, PhD, MBA, FAHA, University of Cincinnati College of Medicine, USA
Title: The Unsung Hero of the Striated Muscles: A Tale of Myosin Binding Protein-C

2:45 PM-2:55 PM **Coffee Break (10min)**

Session III Invited Lecture

Moderators: Yong Sook Kim, PhD, Chonnam National University Hospital, Korea
Hee Chul Cho, PhD, Johns Hopkins School of Medicine, USA

2:55 PM-3:10 PM Somy Yoon, PhD, Chonnam National University, Korea
Title: Targeted Downregulation of MKI67 Mediated by miR-10b-5p Contributes to the Pathogenesis of Kawasaki Vasculitis

3:10 PM-3:25 PM Sung Jin Park, PhD, Emory University, USA
Title: Biohybrid systems and its applications

3:25 PM-3:30 PM Q & A

Session IV

Oral Presentation

Moderators: Hun-Jun Park, MD, PhD, The Catholic University, Korea
Young Min Bae, PhD, Konkuk University, Korea
Sung Jin Park, PhD, Emory University, USA
Junbeom Park, MD, PhD, Ewha Womans University, Korea
YouMi Hwang, MD, PhD, The Catholic University of Korea
Sung Woo Cho, MD, PhD, Inje University

- 3:30 PM-3:40 PM Bo Kyoung Park, BS, Ewha Womans University, Korea
Title: **Identifying Preventive and Therapeutic Effects of SGLT2 Inhibitor on Atrial Fibrillation**
- 3:40 PM-3:50 PM Solah Park, PhD, Konkuk University, Korea
Title: **Na⁺ leak channel NALCN plays an essential role in mineralocorticoid-induced hypertension through nonrenal mechanisms**
- 3:50 PM-4:00 PM Rimshah Abid, PhD, University of Ottawa Heart Institute, Canada
Title: **Antagonistic and Cooperative Dynamics of Irx3 and Irx4 in Ventricular Compaction**
- 4:00 PM-4:10 PM Younghwan Choi, PhD, Johns Hopkins School of Medicine, USA
Title: **Gelatin hydrogel elasticity influences TBX18-induced pacemaker cell behavior**
- 4:10 PM-4:20 PM Eun-Ah Sung, MS, Rutgers NJMS, USA
Title: **Doxorubicin induces cardiomyopathy through Wnt5a-mediated induction of senescence**
- 4:20 PM-4:30 PM Young Geun Choi, MS, University of Minnesota, USA
Title: **ETV2 Transcriptionally Activates Rig1 Gene Expression and Promotes Reprogramming of the Endothelial Lineage**
- 4:30 PM-4:40PM Viola Morris, PhD, Emory University School of Medicine, USA
Title: **Sheet like extracellular matrix secreting single cell microvesicles for reprogrammed endothelial cell therapy towards vascular regeneration**
- 4:40 PM-4:50 PM Q & A

Closing

- 4:50 PM-4:55 PM **Closing Remarks**
Young-sup Yoon, MD, PhD, Emory University School of Medicine
Youngkeun Ahn, MD, PhD, Chonnam National University, Korea

Group Photo

4:55 PM-5:00 PM

Poster Session (joint)

5:00 PM-6:45 PM **Poster viewing- Salon A in the Stevens Meeting Center (B1 floor)**



Society for South Asian Heart Research (SAHR) Oral Session

Room: Marquette (3rd floor), 1:00 PM – 5:00 PM

Opening

1:00 to 1:05 PM Welcome/ Opening Remarks Overview/SAHR Organization

President's Note : Sathyamangala Prasad, PhD, Cleveland Clinic, Ohio

1:05 to 1:10 PM Reports

Treasurer : Mahmood Khan, PhD, The Ohio State University, Ohio

Membership Chair : Venkatesh Sundararajan, PhD, West Virginia University, West Virginia

Mentorship Chair : Hind Lal, PhD, University of Alabama at Birmingham, Alabama

Session I Data Blitz: Pre-doctoral Trainee Presentations (Selected Talks from BCVS Best Abstracts; 5 slides; 4 minutes (+1 min Q&A)).

1:10 PM- Moderators: Varsha Tandra, PhD, Augusta University
Dhanendra Tomar, PhD, Wake Forest University

1:10-1:12 PM Introduction to the Moderators and the Session

1:12 to 1:17 PM: Saradha Miriyala, Boston Children's Hospital and Harvard Medical School
Title: **Spatial Transcriptomics Identifies a Regeneration-Permissive Microenvironment in the Neonatal Mammalian Heart**

1:17 to 1:22 PM Samta Veera; The State University of New Jersey
Title: **PGC-1 α -dependent transcriptional regulatory mechanisms for tricarboxylic acid cycle genes in the heart.**

1:22 to 1:27 PM Sankalpa Chakraborty; Arkansas State University
Title: **Aging Heart Failure with Preserved Ejection Fraction is Mediated by Noncoding RNAs**

1:27 to 1:32 PM Zinnia Tran; West Virginia University
Title: **Cardiac Mitochondrial Dysfunction Induces Region-Specific Mitochondrial Stress Response In The Brain To Adapt Neuronal Changes**

1:32 to 1:37 PM Bibhas Amatya; George Washington University School of Medicine
Title: **Renal NPFFR2-mediated increase in blood pressure is associated with downregulation of cAMP signaling and upregulation of Na⁺/K⁺-ATPase protein expression in the renal proximal tubule**

Session II Data Blitz: Post-doctoral Trainee/Mentored Faculty Presentations (Selected Talks from BCVS Best Abstracts; 5 slides; 4 minutes (+1 min Q&A)).

1:38 Moderators: Saravanakumar Murugesan, PhD, University of Alabama at Birmingham
Ajit Magadam, PhD, Lewis Katz School of Medicine at Temple University

1:38-1:40 PM Introduction to the Moderators and the Session

1:40 to 1:45 PM Anika Nusrat, PhD, University of Houston

Title: **Numb Family Proteins in Epicardium Regulate Epicardial Cells Differentiation and Ventricular Patterning During Development**

1:45 to 1:50 PM

Karthi Sreedevi, PhD, Virginia Tech

Title: **Adeno-associated virus-mediated gene delivery of PERM1 enhances cardiac contractility and mitochondrial biogenesis in mice.**

1:50 to 1:55 PM

Austin Angelotti, PhD, Pennsylvania State University

Title: **Mechanisms of T-lymphocyte Dysfunction in Dilated Cardiomyopathy Patients**

1:55 to 2:00 PM

Vivek Pandey, PhD, University of Kentucky

Title: **O-GlcNAcylation underlies the activation of sodium-glucose cotransporter 1 in diabetic hearts**

2:00 to 2:05 PM

Roshan Dutta, PhD, University of Alabama at Birmingham

Title: **δ -catenin mRNA m6A Methylation Promotes Cardiac Fibrosis following Acute Myocardial Infarction**

2:05 to 2:10 PM

Manisha Deogharia, PhD, University of Texas Health Science Center

Title: **Genetic Deletion of Histone Lysine Demethylase KDM5A in Cardiomyocytes Attenuates LMNA-associated Dilated Cardiomyopathy**

2:10 to 2:15 PM

Anand Prakash Singh, PhD; University of Michigan

Title: **Activin Signaling Inhibition Enhances Cardiac Functional Recovery After Aortic Debanding**

Session III

Plenary Exchange Speaker Seminar

2:20 PM-

Moderator: Danish Sayed, MD, PhD, Rutgers New Jersey Medical School
Divya Sridharan, PhD, The Ohio State University

2:20-2:25 PM

Introduction to the Moderators and the Session

2:25-2:45 PM

Hee Cheol Cho, PhD, Johns Hopkins School of Medicine

Title: **mRNA gene therapy for cardiac pacing**

2:45 PM-2:55 PM

Coffee Break (10min)

Session IV

Invited Faculty Presentations (15-minute Presentation + 5-minute Q/A)

2:55 PM-

Introduction to the Session, Moderators and Speakers

Moderators: Vishwa Rajagopalan, PhD, New York Institute of Technology
Pooja Jadiya, PhD, Wake Forest University School of Medicine

3:00-3:20 PM

Padmini Shirish, PhD; University of California-Davis

Title: **Cardiac Regenerative Therapy Using Gene-edited Stem Cells**

3:20-3:40 PM

Amreen Mughal, PhD; Stadtman Investigator, NINDS-Stroke Branch
NHLBI- Vascular Translational Medicine

Title: **Electro-Calcium Coupling in Brain Capillaries**

3:40-4.00 PM

Priyatansh Gurha, PhD, University of Texas Health Science Center

Title: **Deciphering the function of KDM5 family of histone demethylases in the heart**

4:00 PM-4:20 PM Dipayan Chaudhuri, MD, PhD, University of Utah
Title: **Complex I assembly produces pro-inflammatory reactive oxygen species during normal physiology**

Session V SAHR Townhall: Directions, Suggestions and Future

4:20- 4:50 PM

President : Sathyamangala Prasad, PhD, Cleveland Clinic, Ohio
Programming Chair : Shyam S. Bansal, PhD, Pennsylvania State University
Mentorship Chair : Hind LaJ, PhD, University of Alabama at Birmingham, Alabama
Early Career Committee Chair : Dhanendra Tomar, PhD, Wake Forest University School of Medicine

Closing Remarks/ Photo Session

4:50 PM-4:55 PM Early Career Chair: Dhanendra Tomar, PhD, Wake Forest University, North Carolina
Programming Chair: Shyam S Bansal, PhD, Pennsylvania State University, Hershey, PA
4:55-5:00 PM SAHR Members Group Photo session
5:00 PM -7:00 PM **Poster viewing - Salon A in the Stevens Meeting Center (B1 floor)**



2024 ACS Joint Assembly Session and Dinner

Room: Waldorf (3rd floor), 7:00 PM – 10:00 PM

7:00-7:05 PM

Opening Remarks

Masataka Nishiga, MD, PhD, Stanford University School of Medicine

7:05-8:00 PM

Dinner

- 4th “BCVS got Talents” Show

Hosts: Rongxue “Rosie” Wu, MD, PhD and Daisuke Shimura, Ph.D.

Technical support and Co-host: Jianli Zhao, MD



7:10 PM - Jianli Zhao, MD:

Saxophone - "Going Home"

7:20 PM - Divya Sridaran, PhD:

Dance Performance

7:25 PM - Venkata Naga Srikanth Garikipati, PhD:

Solo Performance

7:30 PM - Hanyu Su: Saxophone

Saxophone- "The Waves Still Sound the Same"

7:40 PM - Sneha Rajasekaran:

Dance Performance

7:50 PM - Rongxue Wu, MD, PhD:

Solo - "My Heart Will Go On"

8:00-8:15 PM ACS Program Introduction

ACRE Xuejun (XJ) Wang, MD, PhD, University of South Dakota

JCRA Masataka Nishiga, MD, PhD, Stanford University School of Medicine

KCS Young-sup Yoon, MD, PhD, Emory University School of Medicine

SAHR: Sathyamangla Prasad, PhD, FAHA, Cleveland Clinic

8:15-8:30 PM

BCVS Leadership Remarks

BCVS Vice Chair Maria Kontaridis, PhD, Masonic Medical Research Institute

BCVS 2024 Program Committee Chair Sumanth Prabhu, MD, FAHA, Washington University

BCVS Leadership Committee Yajing Wang, PhD, The Univ. of Alabama at Birmingham

BCVS Leadership Committee Xinliang Ma, MD, PhD, Thomas Jefferson University

8:30-9:15 PM

Keynote Speech

Moderator: Junichi Sadoshima, Rutgers New Jersey Medical School

“My journey to becoming a physician-scientist”

Hossein Ardehali, MD, PhD

Northwestern University

Director, Feinberg Cardiovascular and Renal Research Institute

Center for Molecular Cardiology

Thomas D. Spies Professor of Cardiac Metabolism

9:15-9:30 PM Award Announcement

ACRE Kevin Yang Xiang, Ph.D., University of California, Davis
JCRA Koichiro Kuwahara, MD, PhD, Shinshu University School of Medicine
KCS Soon Jun Hong, MD, PhD, Korea University, Korea
SAHR: Mahmood Khan, PhD, The Ohio State University

9:30 PM

Closing Remarks

Zhao Wang, PhD, ACRE President-Elect, City of Hope National Medical Center, CA



2024 ACS Poster Session

Room: Salon A in the Stevens Meeting Center (B1 floor), 5:00 PM – 6:45 PM

All poster presenters are requested to set up their posters at the Board numbers specified on the board.

● Academy of Cardiovascular Research Excellent (ACRE)

Board#	Ctr#	First	Last	Title
A2	4091742	Ying	Wang	Gene therapy of MAOA fine-tunes nuclear cAMP nanodomain and improves cardiac hypertrophy in mice
A3	4090095	Zinan	Zhou	Cigarette smoking causes somatic mutations in cardiac endothelial cells
A5	4098435	Mei	Xin	CHD8 is Essential for Postnatal Heart Function through Preserving Mitochondrial Integrity
A6	4098320	Qiang	Zhu	Unveiling the Role of GRAF1 in Orchestrating Mitophagy and Metabolic Flexibility in Stressed Cardiomyocytes
A7	4092323	Yuxia	Li	Single-nucleus and bulk multiomic analyses reveal the dynamics of individual cardiac cell types after myocardial infarction and the underlying gene regulatory networks
A8	4090536	Lianjie	Miao	β 1 integrins regulate cellular behavior and cardiomyocyte organization during ventricular wall formation
A9	4087535	Yonggang	Ma	Age-associated Alterations in T cell Output and Functions
A10	4094955	Yifan	Xie	Decoding m6a RNA methylomes identifies Igf2bp1 as a common barrier to direct reprogramming
A12		Patricia Kim Phuong	Ngyyen	Meta-analysis of single cell RNA sequencing of CD8+ T cells in human arteries reveals heterogenous cell states
A13		Patricia Kim Phuong	Ngyyen	Single-cell RNA analysis of the immune system of APOE-/- mice shows shared senescent CD8 T cells among immune organs and atherosclerotic plaque
A14	4090074	Md Salim	Ahammed	RPN6-Serine14 Phosphorylation by PKA Protects Against Systolic Overload-Induced Cardiac Remodeling and Heart Failure
A15	4090567	Saima	Ejaz	Genetic Blockade of PKA-mediated Phosphoregulation of 26S Proteasomes Exacerbates Pathology in Both the Brain and Heart of an Alzheimer's Disease Model
A16	4089330	Kasturi	Markandran	Molecular Basis of Sepsis-Induced Cardiomyopathy Under Anthracycline Treatment: Insights from Mouse Model
A17	4097332	Ellen	Poon	Using a mitochondria-rich hiPSC-CM model to investigate doxorubicin-induced cardiotoxicity
A19	4091548	Xinjie	Wang	Global distribution of cardiac exosomes after myocardial infarction
A20	4071074	Junji	Xing	Treatment of Viral Myocarditis by Targeting the TRIM29-PERK Axis-Mediated ER Stress Immune Response

● Japanese Cardiovascular Research Association (JCRA)

Board#	Ctr#	First	Last	Title
J1	4084249	Masaya	Kogure	Inhibition of TAOK1-mediated Cardiomyocyte Death Attenuates Doxorubicin-Induced Cardiotoxicity
J3	4092256	Sho	Tanosaki	Metabolomic Profile of Human End-Stage Ischemic Cardiomyopathy Reveals Few Differences from Non-Ischemic Cardiomyopathy

J4	4095993	Shuji	Chino	Optimizing Immunosuppressive Strategies for Enhanced Survival of Allogeneic Pluripotent Stem Cell-Derived Cardiomyocytes in Non-Human Primate Transplantation Model
J5	4096138	Yuta	Yamamoto	Variant Effect Mapping by Combining Base-editing Mutagenesis and Multiplexed Functional Assays Using Human Cardiomyocytes
J6	4096809	Risa	Mukai	Mst1 induces cardiac dysfunction through the activation of PERK
J7	4097952	Seitaro	Nomura	Single-cell spatial omics analysis to develop precision cardiovascular medicine
J8	4098276	Naoko	Shiba	Exon-skipping therapy can restore functional dystrophin attenuating calcium overload for DMD cardiomyopathy with mutations in actin-binding domain 1

● Korean Cardiovascular Society (KCS)

Board#	Ctr#	First	Last	Title
K1	4090280	Viola	Morris	Sheet like extracellular matrix secreting single cell microvesicles for reprogrammed endothelial cell therapy towards vascular regeneration
K2	4091278	Young Geun	Choi	ETV2 Transcriptionally Activates Rig1 Gene Expression and Promotes Reprogramming of the Endothelial Lineage
K3	4093516	Hyewon	Park	Identifying Preventive and Therapeutic Effects of SGLT2 Inhibitor on Atrial Fibrillation
K4	4094599	Hye Ryeong	Lee	Na ⁺ leak channel NALCN plays an essential role in mineralocorticoid-induced hypertension through nonrenal mechanisms
K5	4097727	Young Hwan	Choi	Gelatin hydrogel elasticity influences TBX18-induced pacemaker cell behavior
K6	4097850	Eun-Ah	Sung	Doxorubicin induces cardiomyopathy through Wnt5a-mediated induction of senescence
K7	4097990	Kyoung-Han	Kim	Antagonistic and Cooperative Dynamics of Irx3 and Irx4 in Ventricular Compaction
K8	4099111	Gwang Hyeon	Eom	Targeted Downregulation of MKI67 Mediated by miR-10b-5p Contributes to the Pathogenesis of Kawasaki Vasculitis

● Society for South Asian Heart Research (SAHR)

Board#	Ctr#	First	Last	Title
S01	4095157	Thirupura S	Shankar	DNA METHYLATION AND TRANSCRIPTIONAL MARKERS OF MYOCARDIAL REVERSE REMODELING IN HF PATIENTS ON LVAD SUPPORT
S02	4094298	Sri Karthika	Shanmugam	Hacking the ubiquitin code to distinctively modulate ion channel functional expression
S03	4091755	Snekha	Rajasekaran	Analyzing the Predicted Impact of Published SCN5A Variants in Juvenile-Onset Sick Sinus Syndrome
S04	4097818	Sankalpa	Chakraborty	Aging Heart Failure with Preserved Ejection Fraction is Mediated by Noncoding RNAs
S05	4087463	Roshni	Shetty	Translating ECG responses to drugs across sexes: model development and validation in the clinic
S06	4097461	Charan	Gurralla	Epigenetic Mechanisms Regulate Sex Differences in Cardiac Reparative Functions of Bone Marrow Progenitor Cells
S07	4090140	Shivani	Arora	Targeted chelation therapy decreases Cryopyrin/NLRP3 expression and acts as senomorphic in Chronic Kidney Disorder induced Vascular Calcification.
S08	4098370	Seshagiri Rao	Nandula	Endothelial cell regeneration by secretome obtained from P53 silenced bone marrow derived mesenchymal stromal cells (BM-MSCs)
S09	4098375	Zinnia	Tran	Cardiac Mitochondrial Dysfunction Induces Region-Specific Mitochondrial Stress Response In The Brain To Adapt Neuronal Changes

S10	4090074	Md Salim	Ahammed	RPN6-Serine14 Phosphorylation by PKA Protects Against Systolic Overload-Induced Cardiac Remodeling and Heart Failure
S11	4090092	Anand	Singh	Activin Signaling Inhibition Enhances Cardiac Functional Recovery After Aortic Debanding
S12	4092416	Richa	Aishwarya	Loss of Sigmar1 Aggravated Cardiac Proteotoxicity and Cardiac Dysfunction in Mutant α B-Crystallin Mouse
S13	4096784	Vivek	Pandey	O-GlcNAcylation underlies the activation of sodium-glucose cotransporter 1 in diabetic hearts
S14	4096955	Aaryan	Kohli	A Potential Link Between Stress Kinase JNK2 and AKAP-1 in Catecholamine-Induced Acute Heart Failure
S15	4097608	Anushruti	Ashok	Mechanistic basis of protein phosphatase 2A inhibition by I2PP2A dimerization: A key step in β AR resensitization
S16	4098312	PRERNA	GIRI	Role of Z-disc as a Driver of Hypertrophy and Sarcomere Assembly in Hypertrophic Cardiomyopathy
S17	4098313	KARTHI	SREEDEVI	Adeno-associated virus-mediated gene delivery of PERM1 enhances cardiac contractility and mitochondrial biogenesis in mice.
S18	4091541	Prathapan	Ayyappan	Effect Of Grandmaternal Diabetes and High Fat Diet on Cardiometabolic Dysfunction in the Second Generation (F2) Newborns
S19	4093129	Satvik	Mareedu	Neurofibromin 2 regulates metabolic gene expression and cardiac responses to pressure overload stress
S20	4094321	Sakthijothi	Muthu	The Mitochondrial LonP1 Is Indispensable For Cardiac Maturation And Function
S21	4097707	Neeraj Kumar	Rai	Investigating Mechanisms Of MCUB Inhibition Of Mitochondrial Calcium Uptake
S22	4092854	Syed Anees	Ahmed	Estrogen modulation of ethanol-evoked cardiac oxidative stress and dysfunction: Role of circadian clock period-2 and ferroptosis in estrogen deficient rats
S23	4093126	Narasimman	Gurusamy	Cardiac Adaptations and Mitochondrial Protection Through Long Noncoding RNAs Regulation in Mice on a Ketogenic Diet
S24	4082556	Rosy	Joshi-Mukherjee	Doxorubicin-Induced hiPSC Hormetic Model
S25	4088879	Lynn	Yap	Hallmark Maturation of the Human Pluripotent Stem Cells-derived Cardiovascular Progenitors in Myocardial Infarcted Large Animal Model
S26	4097455	Kiran	Ali	Recapitulating Cardiac Microenvironment: Elucidating the Role of ECM Components and Architecture on Cardiac Differentiation
S27	4098337	Divya	Sridharan	Cell-Specific Metabolic Labelling Identifies hiPSC-CM Proteome In Vitro and In Vivo Post-Transplantation
S28	4098277	Austin	Angelotti	Mechanisms of T-lymphocyte Dysfunction in Dilated Cardiomyopathy Patients
S29	4097868	Anika	Nusrat	Numb Family Proteins in Epicardium Regulate Epicardial Cells Differentiation and Ventricular Patterning During Development
S30	4095073	Thirupura S	Shankar	Adipocyte Enhancer Binding Protein 1 (AEBP1) Inhibition as a Potential Anti-Fibrotic Therapy in Heart Failure
S31	4095299	Suchita	Pande	AAV9-Mediated Overexpression of Mixed Lineage Kinase 3 After Transaortic Constriction Improves Left Ventricular Function
S32	4093745	Chowdhury S.	Abdullah	Cardiomyocyte Specific Sustained Atg7 Overexpression Activates Mitochondrial Autophagy in the Heart
S33	4091133	Ravinder	Gaddam	Endothelium-Targeted MiR-122 Inhibition Improves Vascular Endothelial Function In a High-Fat Diet Fed mice
S34	4091193	Samta	Veera	PGC-1 α -dependent transcriptional regulatory mechanisms for tricarboxylic acid cycle genes in the heart.
S35	4096811	Roshan	Dutta	δ -catenin mRNA m6A Methylation Promotes Cardiac Fibrosis following Acute Myocardial Infarction

S36	4097294	Qiongxin	Wang	Cardiac macrophages expressing CD206 and IL-4Ra are required for adverse LV remodeling in HF
S37	4089330	Kasturi	Markandran	Molecular Basis of Sepsis-Induced Cardiomyopathy Under Anthracycline Treatment: Insights from Mouse Model

Advertisements from our sponsors



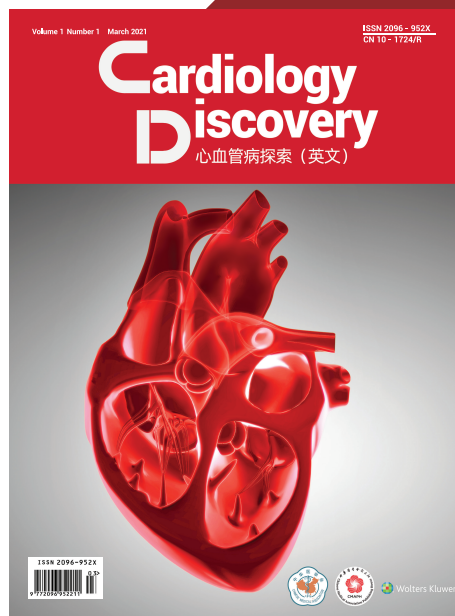
Wolters Kluwer

Cardiology Discovery

CALL FOR PAPERS

on all aspects of cardiovascular
medicine and surgery

- > **Sponsor:**
Chinese Medical Association (CMA)
- > **Publishing:**
CMA Publishing House (CMAPH)



- Official journal of the Chinese Society of Cardiology (CSC) of CMA
- Indexed with DOAJ, Scopus
- OA journal
- APC is free



WeChat

Submission: <https://www.editorialmanager.com/cardiodiscovery>

Website: <https://journals.lww.com/cd/pages/default.aspx>

Twitter @CardiologyDisc1

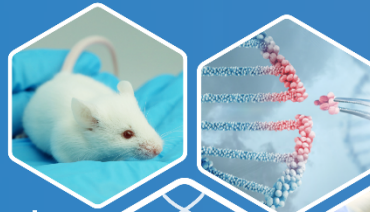
Facebook: cardiology.discovery

E-mail: fuxiaoxia@cmaph.org, gaohanjia@cmaph.org

Genetically Engineered Animal Models

23,000+ models generated (mice, rats, zebrafish, cell lines)

10,000+ research-ready models



Custom Model Solutions

CRISPR/Cas9 and ESC-mediated

Knockout	Overexpression
Conditional KO	Point mutation
Knock-in	Immunodeficient
Fluor. Reporter	Transgenic

Therapeutic Targeted Humanized Models

In vivo: 600+ mouse & rat models

In vitro: 500+ validated cell lines



Comprehensive CRO Services

Preclinical Drug Efficacy
In vivo Pharmacology
 Disease Modeling
 Biomarker Discovery
 Humanized Antibody R&D Platforms



Contact us:

Website: www.genobiotx.com
 Email: info@genobiotx.com
 Address: 10410 Corporate Dr., Sugar Land, TX, 77478

OBiO® | SCIENTIFIC SERVICES

Make gene delivery accessible!



Plasmids and siRNA



Adeno-associated virus, AAV



Adenovirus, ADV



Lentiviral vector, LVV



Herpes Simplex Virus, HSV



Retrovirus, RV

High purity
quality GMP-similar grade

Low empty shell
endotoxin

110,000+
Viral Packaging Experience

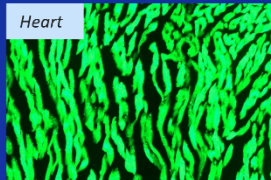
55,000+
Viral Vectors

15,000+
Research Customers

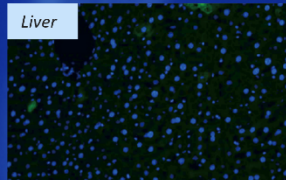
AAV-Heart system

new AAV serotype and enhanced cTnTo promoter, with More efficient than AAV9-cTnT system

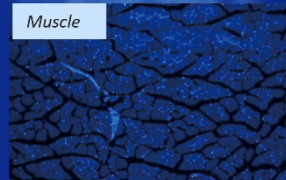
Heart



Liver



Muscle



Promoters

cTnT/cTnTo: cardiomyocyte
 Postn: Cardiac fibroblast
 hFLT1/Tie1: vascular endothelial cell
 SM22-a: vascular smooth muscle cell



Catalogue 2024



Animal anesthesia & surgery Solutions



Blood Perfusion Assessment

**Your Reliable Partner
For Cardiovascular Research**



Histology Equipment & Pathology Section



Cell and Molecular Biology

www.rwdstco.com 1-858-900-5879
10410 Corporate Drive, Sugar Land, TX 77478 USA

22+ Years
R&D Input: 15%+ Revenue

100+ Countries and Regions
10+ New Products / Year

6,000+ Universities

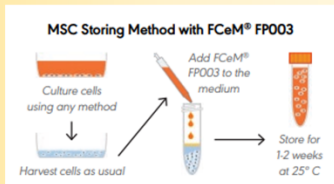
1,000+ Research Institutes

2,300+ Hospitals

35,000+ Customers

14,500+ Theses

**~2 Weeks Room Temperature
Storage/Transportation of
Single Cells & Spheroids**

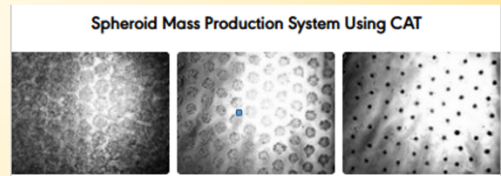
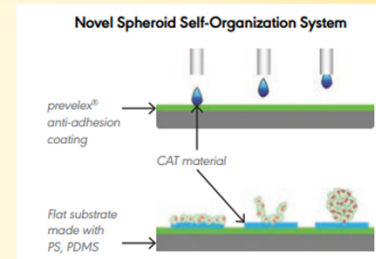


3-Dimensional Cell Culture Medium
**FCeM® Advance-CR
Preparation Kit**

FOR RESEARCH USE ONLY DO NOT USE for any purpose other than for research use.



**Solutions for Cell
Therapy and Drug
Discovery by
Nissan Chemical**



**Highly Efficient and Precise
Size-Controlled Cell
Spheroids Production**





2024 ACS Symposium Committee

● Academy of Cardiovascular Research Excellent (ACRE) Board

President	Xuejun (XJ) Wang, MD, PhD, University of South Dakota, SD
President-Elect	Zhao Wang, PhD, City of Hope National Medical Center, CA
Program/Science Chairs	Li Qian, PhD, University of North Carolina, NC
	Liya Yin, MD, PhD, Northeast Ohio Medical University, OH
Finance Committee Chair	Qiangrong Liang, MD, PhD, New York Institute of Technology, NY
Education/Award Chair	Yang Kevin Xiang, PhD, University of California, Davis, CA
Multi-Media and Publication Chair	Rongxue (Rosie) Wu, MD, PhD, University of Chicago, IL
General Secretary	Huabo Su, PhD, Augusta University, GA
Membership Chair	Yajing Wang, MD, PhD, University of Alabama, AL
Long-range Planning Chair	Jiang (JC) Chang, MD, PhD, Texas A&M University, TX

The ACRE scientific taskforce:

Na Li, Zhaokang Cheng, Kai Jiao, Yu Liu, Wei Guo, Xi Fang, Mingfu Wu, Lei Yang, Yi Hong, Dan Tong, Ying Wang, Weijia Luo, Jie Li, Yaoliang Tang, Dan Tong, Hongyu Qiu, Hongchao Guo, Liang Xie

● Japanese Cardiovascular Research Association (JCRA) Board

Chair	Masataka Nishiga, MD, PhD, Stanford University School of Medicine, California, CA
Co-chair	Daisuke Shimura, PhD, University of Utah, UT
Co-chair	Satoru Kobayashi, PhD, New York Institute of Technology, NY
General Secretary	Daisuke Yoshinaga, MD, PhD, Boston Children's Hospital and Harvard Medical School, MA
Task force	Taiki Hayasaka, MD, PhD, Indiana University School of Medicine, IN
	Risa Mukai, PhD, Rutgers New Jersey Medical School, New Jersey, NJ
	Tomohisa Nagoshi, MD, PhD, The Jikei University School of Medicine, Japan
	Seitaro Nomura, MD, PhD, The University of Tokyo, Japan
	Yuji Shiba, MD, PhD, Shinshu University, Japan
	Yuta Yamamoto, DVM, PhD, Stanford University
	Shingo Narita, MD, PhD, Stanford University
Advisor	Junichi Sadoshima, MD, PhD, Rutgers New Jersey Medical School, New Jersey, NJ
Advisor	Koichiro Kuwahara, MD, PhD, Shinshu University, Japan

● Korean Cardiovascular Society (KCS) Board

Young-sup Yoon, MD, PhD, Emory University, GA
 Soon Jun Hong, MD, PhD, Korea University, South Korea

Yong Sook Kim, PhD, Chonnam National University, South Korea
Sang-Ho Lee, PhD, Emory University, GA

The KCS-ACS scientific taskforce:

Youngkeun Ahn, Soon Jun Hong, Hoonjun Park, Jihyun Jang, Kyung-Han Kim, Hee Chul Cho, Somy Yoon, Young Min Bae, Junbeom Park, You-Mi Hwang, Sung-Jin Park, Bo Kyung Park, Hey Ryeong Lee, Younghwan Choi, Eun-Ah Sung, Young Geun Choi, Sang-Ho Lee, Youngmin Han, Yong Sook Kim, Young-sup Yoon

● Society for South Asian Heart Research (SAHR) Board

President	Sathyamangalam Prasad, PhD, Cleveland Clinic
Secretary	Sailaja Paruchuri, PhD, University of Toledo
Treasurer	Mahmood Khan, PhD, The Ohio State University
Program Committee Chair	Shyam S. Bansal, PhD, Pennsylvania State University
Membership Committee Chair	Venkatesh Sundararajan, M.Pharm., Ph.D., West Virginia University
Membership Committee Vice Chair	Shubha Gururaja Rao, Ph.D., Ohio Northern University
Early Career Committee Chair	Dhanendra Tomar, PhD, Wake Forest University
Early Career Committee Vice Chair	VN Srikanth Garikipati, PhD, Temple University
Communications Committee Chair	Viswanathan Rajagopalan, PhD, New York Institute of Technology
Communications Committee Vice Chair	Narasimman Gurusamy, PhD, University of Tennessee Health Science Center
Mentoring Committee Chair	Hind Lal, PhD, University of Alabama at Birmingham
Mentoring Committee Vice Chair	Charles Thodeti, PhD, University of Toledo
Metabolic group Chair	Sabyasachi (Saby) Sen, MD, PhD, George Washington University
Metabolic group Vice Chair	Dinender K. Singla, PhD, University of Central Florida

Special Thanks!

We thank Ms. Gloria Bailey (Rutgers New Jersey Medical School) for her expert assistance as liaison.